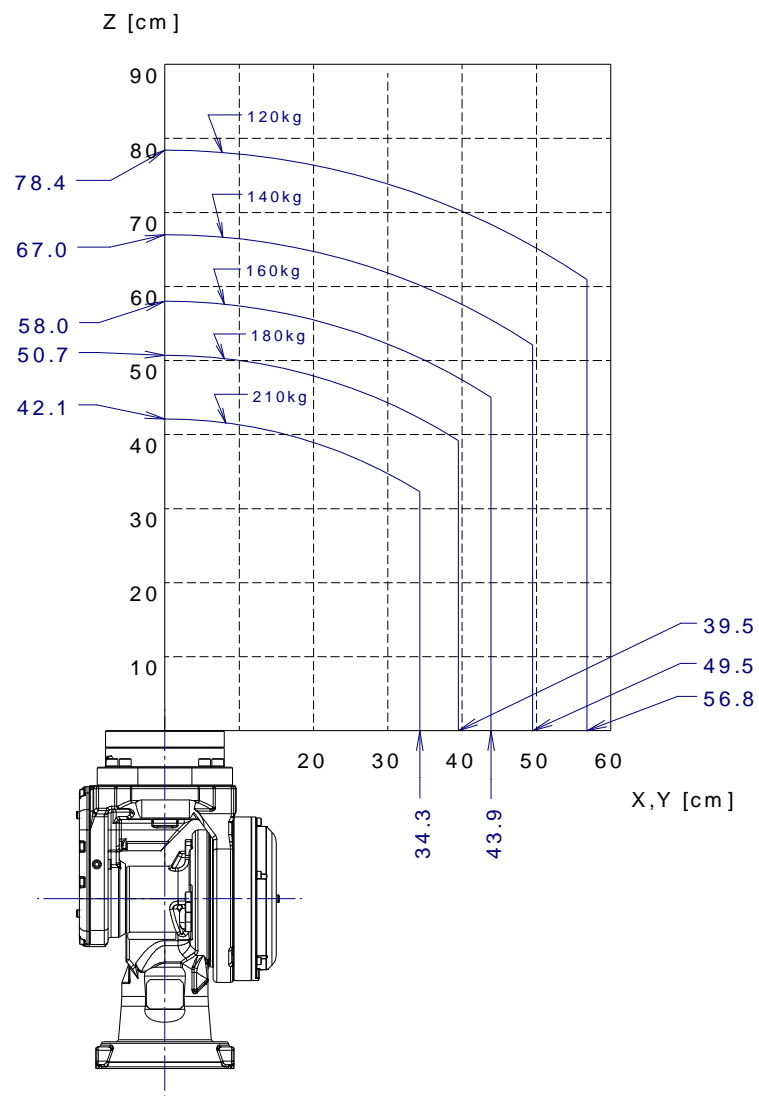
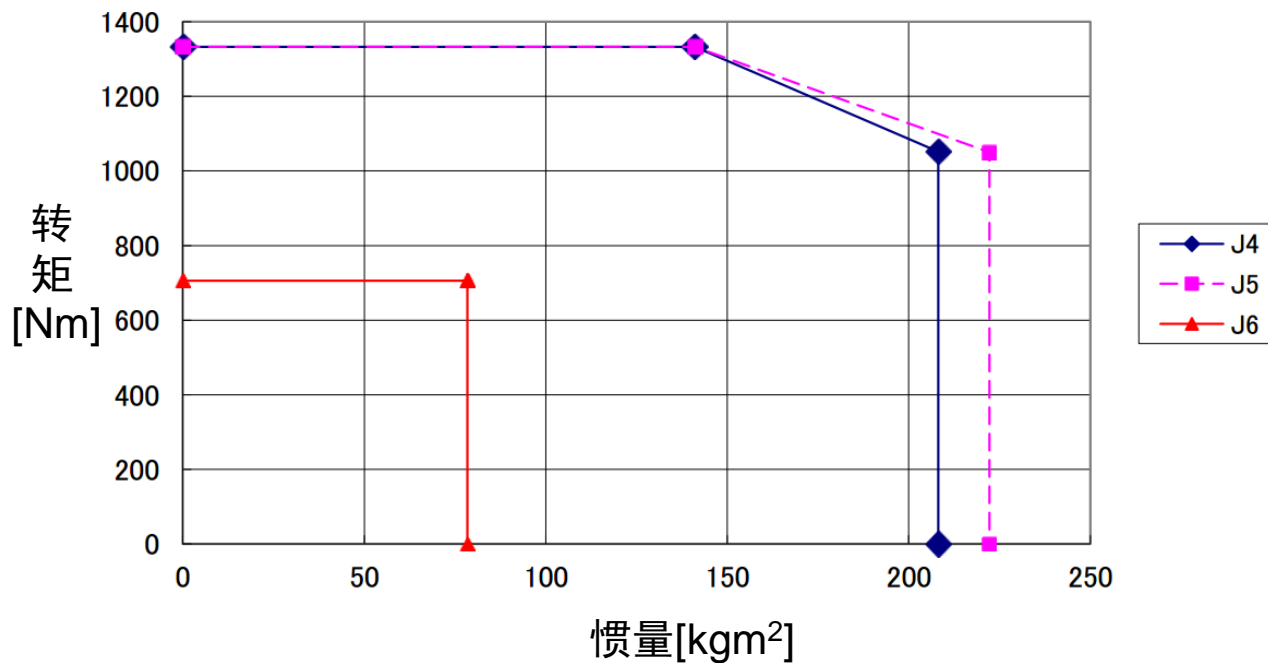


# FANUC机器人 R-2000*i*C/210WE

# 手腕允许负载曲线图



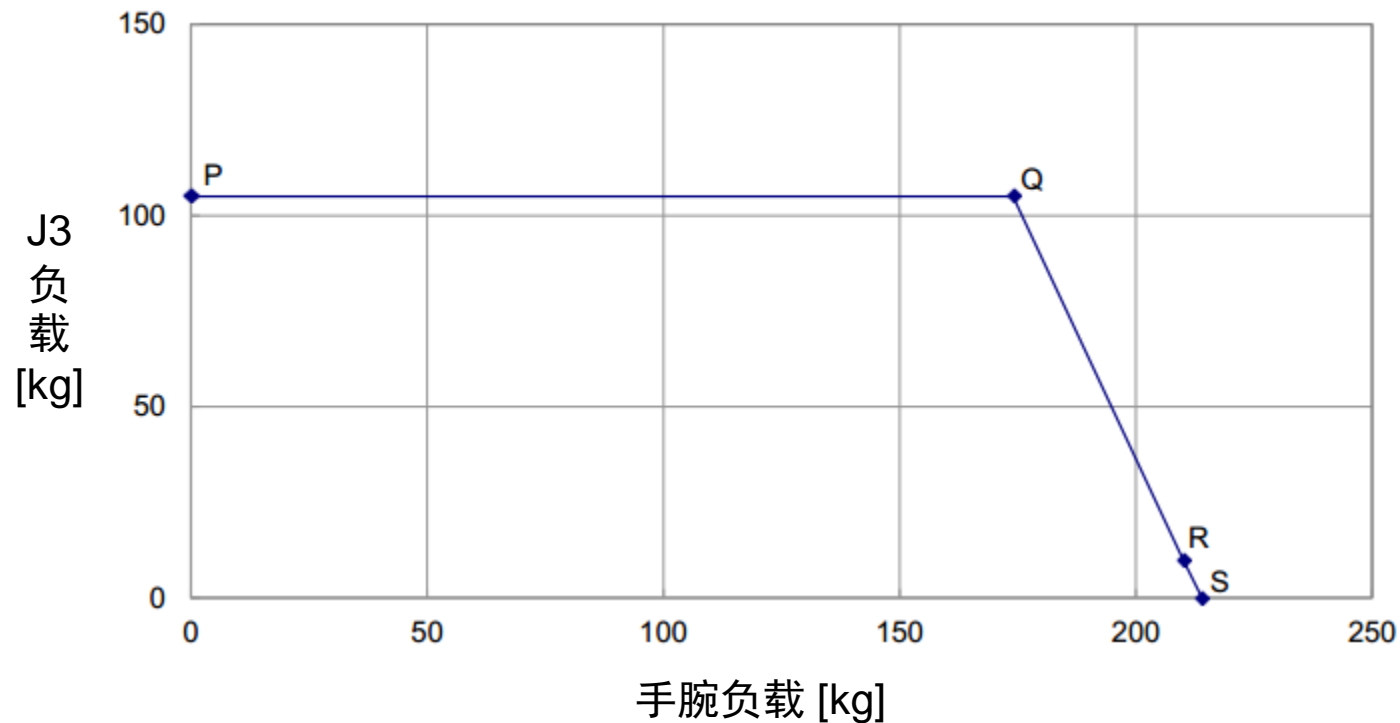
## 复合负载曲线图



标准规格数据

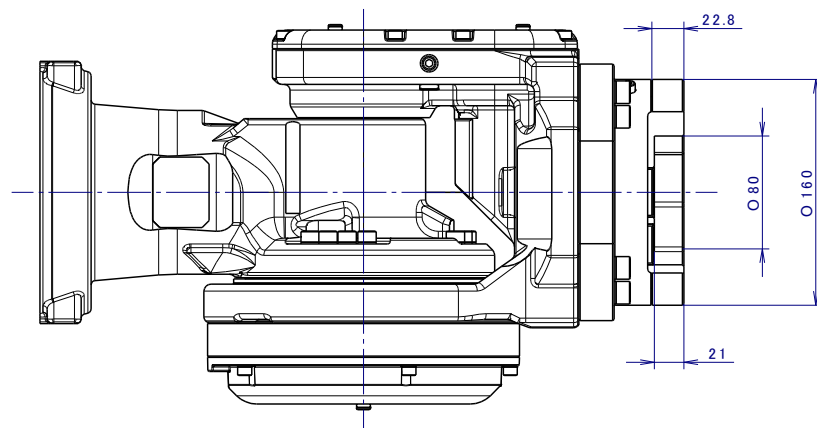
转矩 (Nm)			惯量 (kgm <sup>2</sup> )			质量 (kg)
J4	J5	J6	J4	J5	J6	
1333	1333	706	141.1	141.1	78.4	210

## 手腕负载和J3负载曲线图

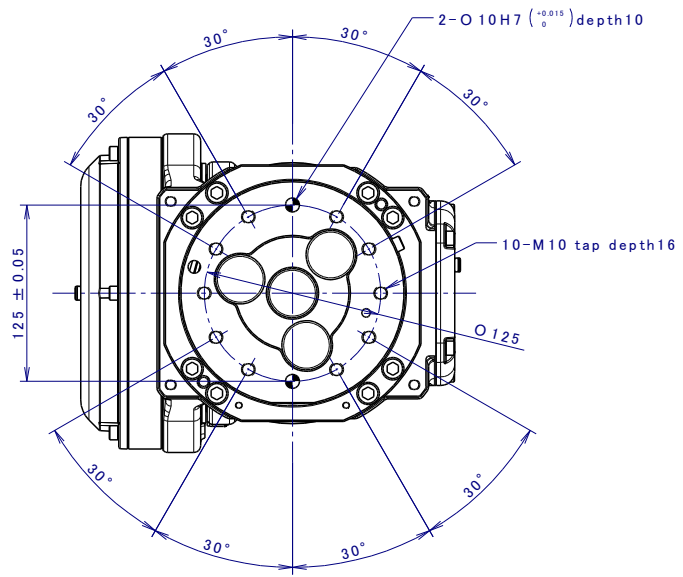
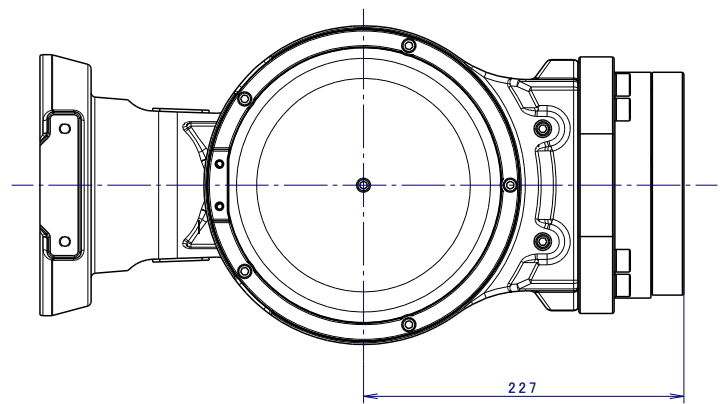


	P	Q	R	S
手腕负载	0	174	210	214
J3 负载	105	105	10	0

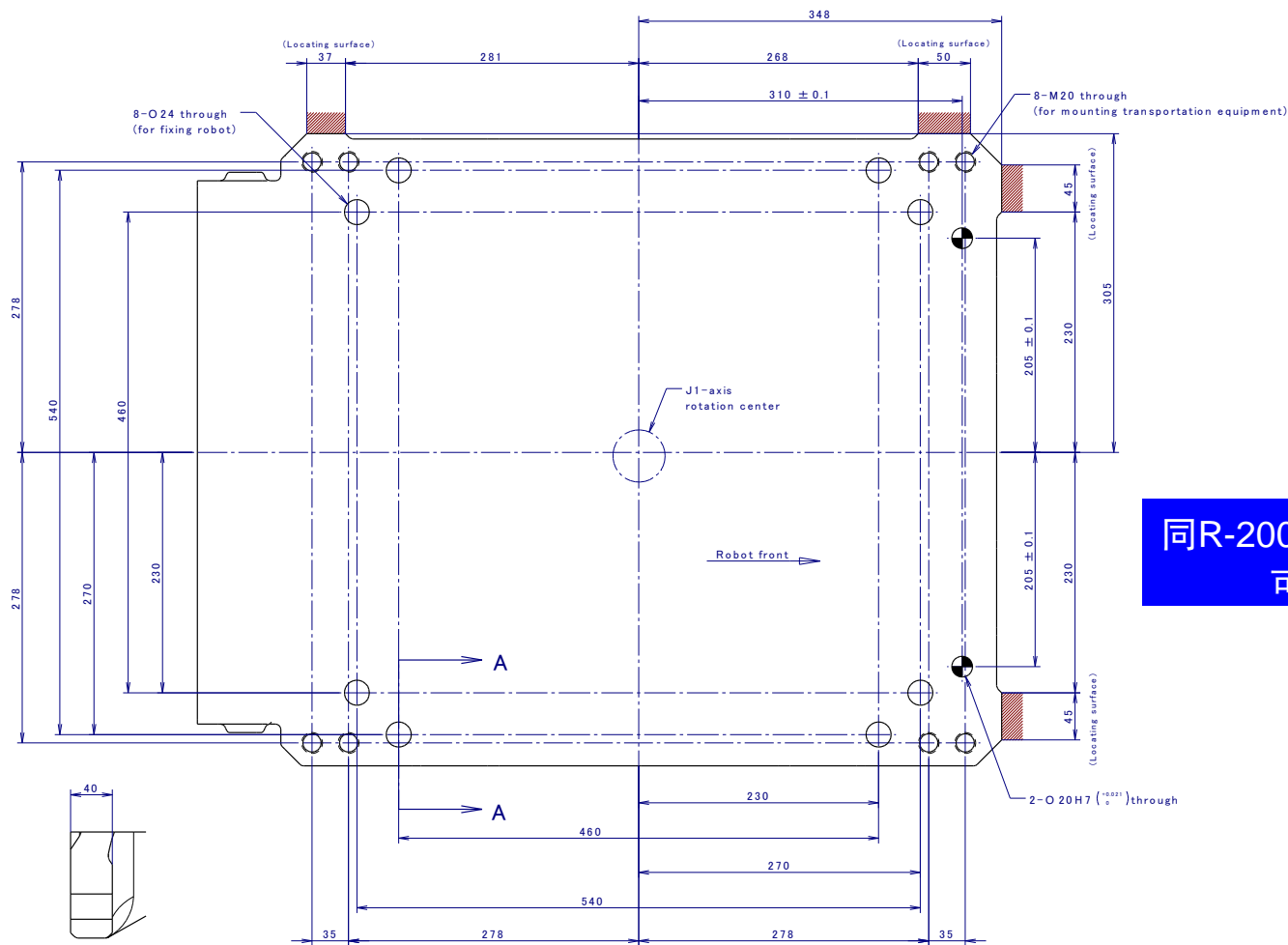
# 末端执行器安装面尺寸



同R-2000iB/210WE  
可互换



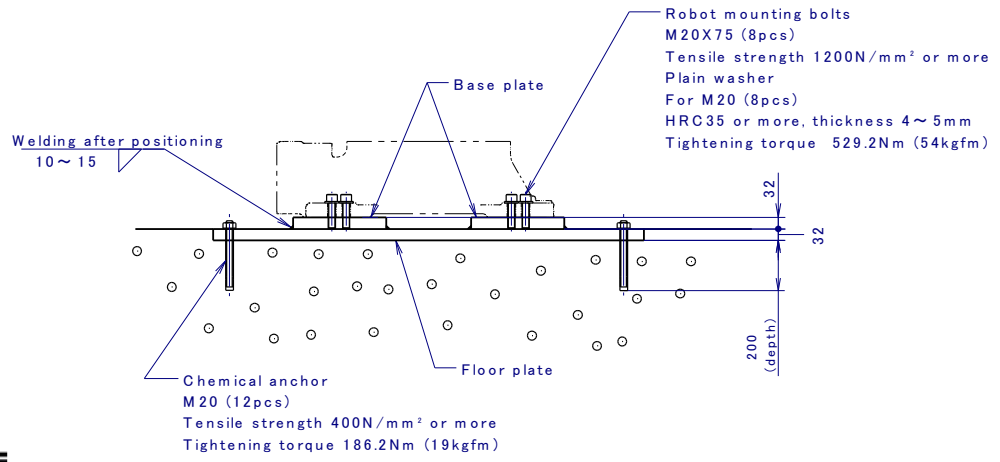
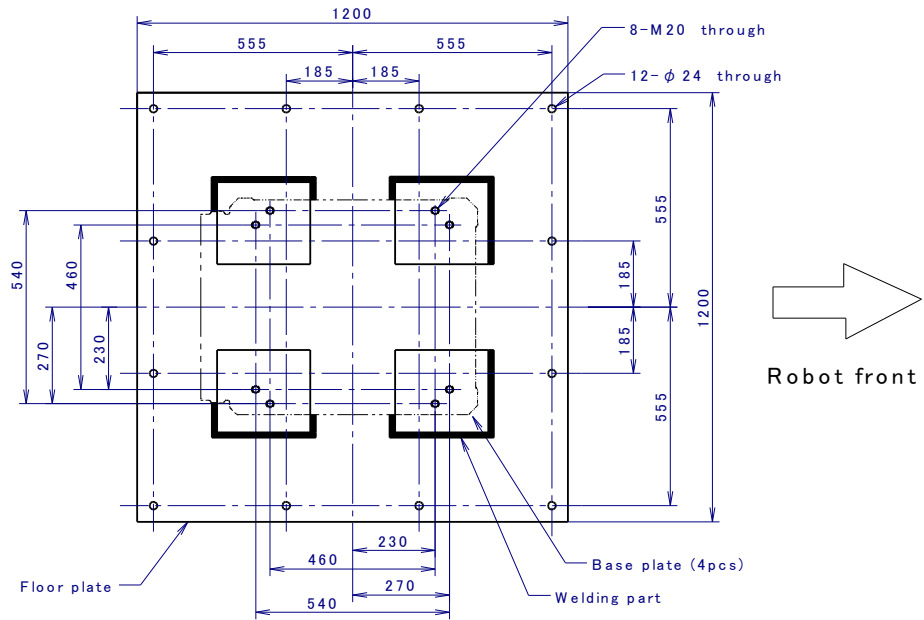
# 安装尺寸（底座）



同R-2000iB/210WE  
可互换

Section A-A

# 标准安装底板尺寸



# 设备安装面尺寸

