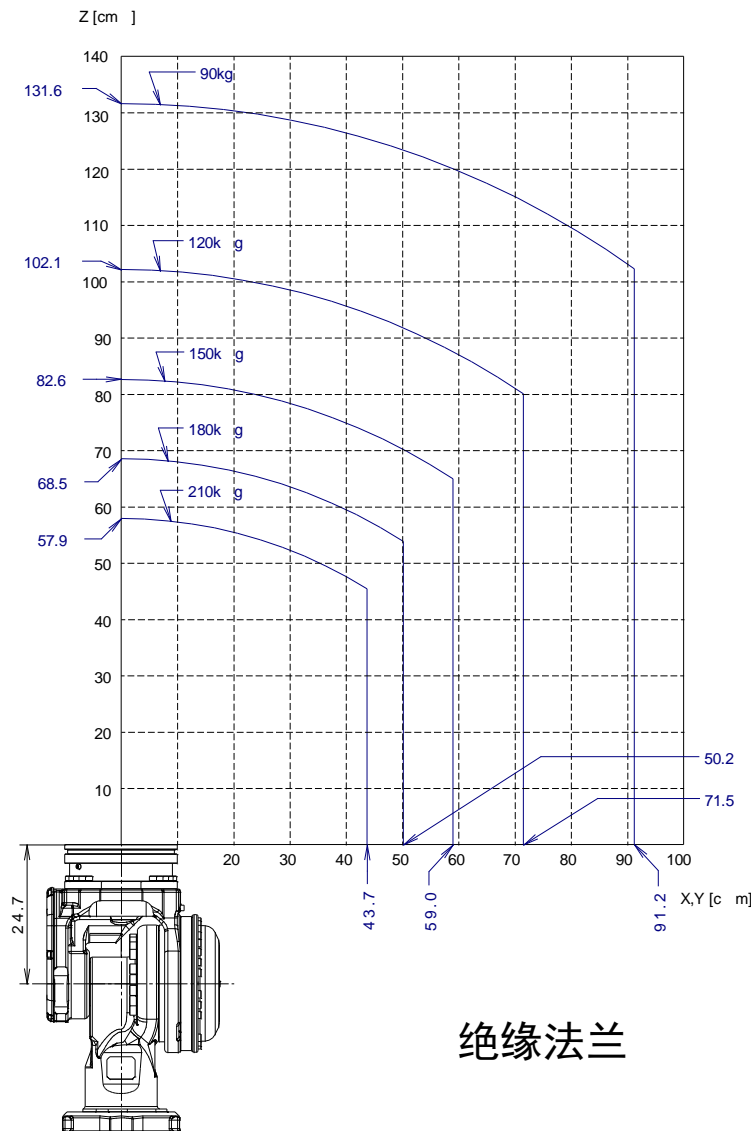
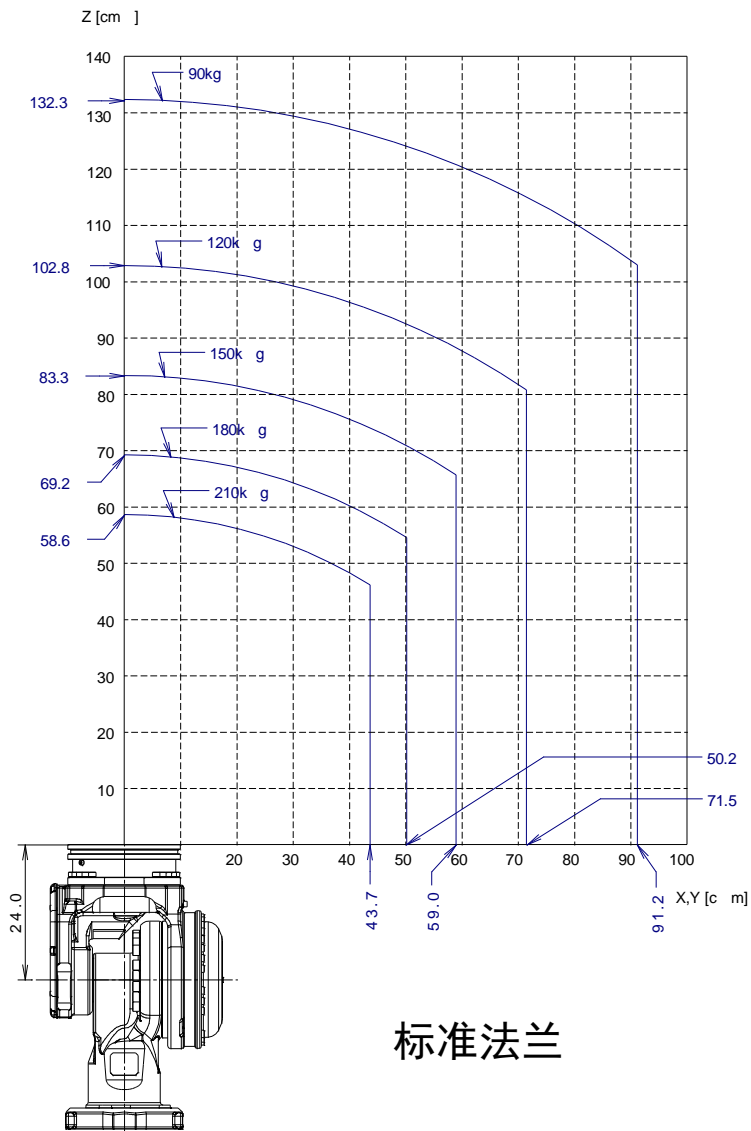
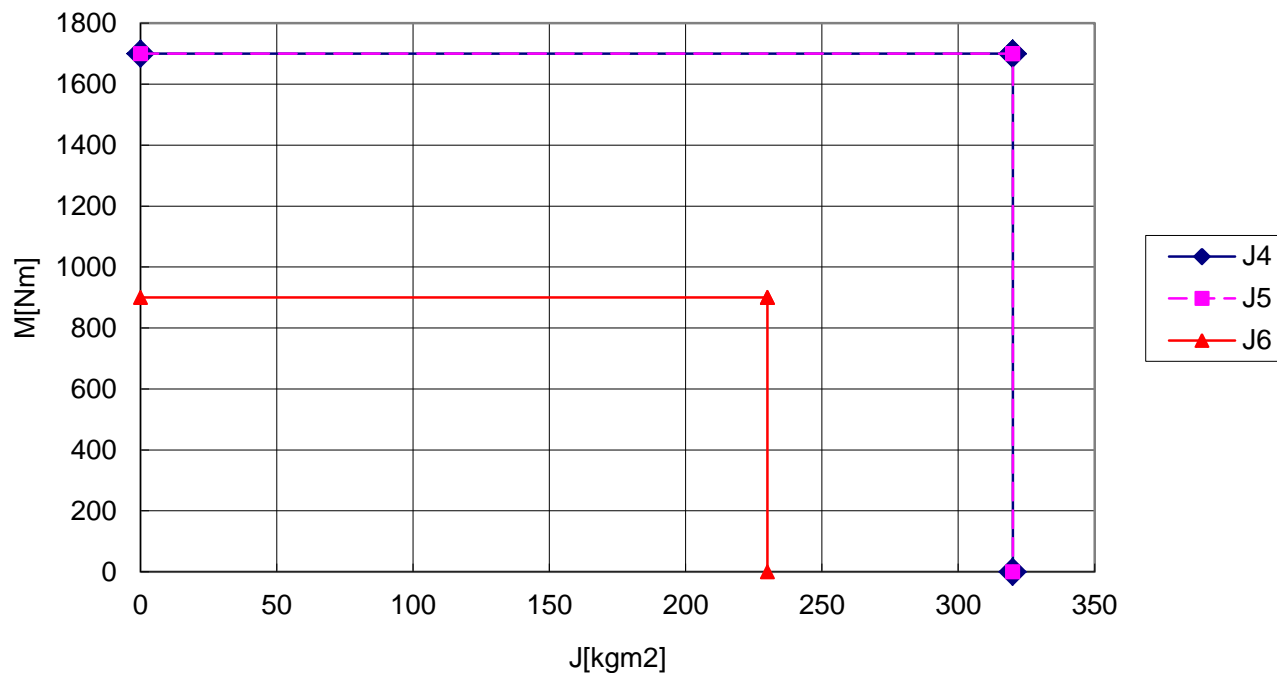


FANUC机器人 R-2000*i*C/210L

手腕允许负载曲线图



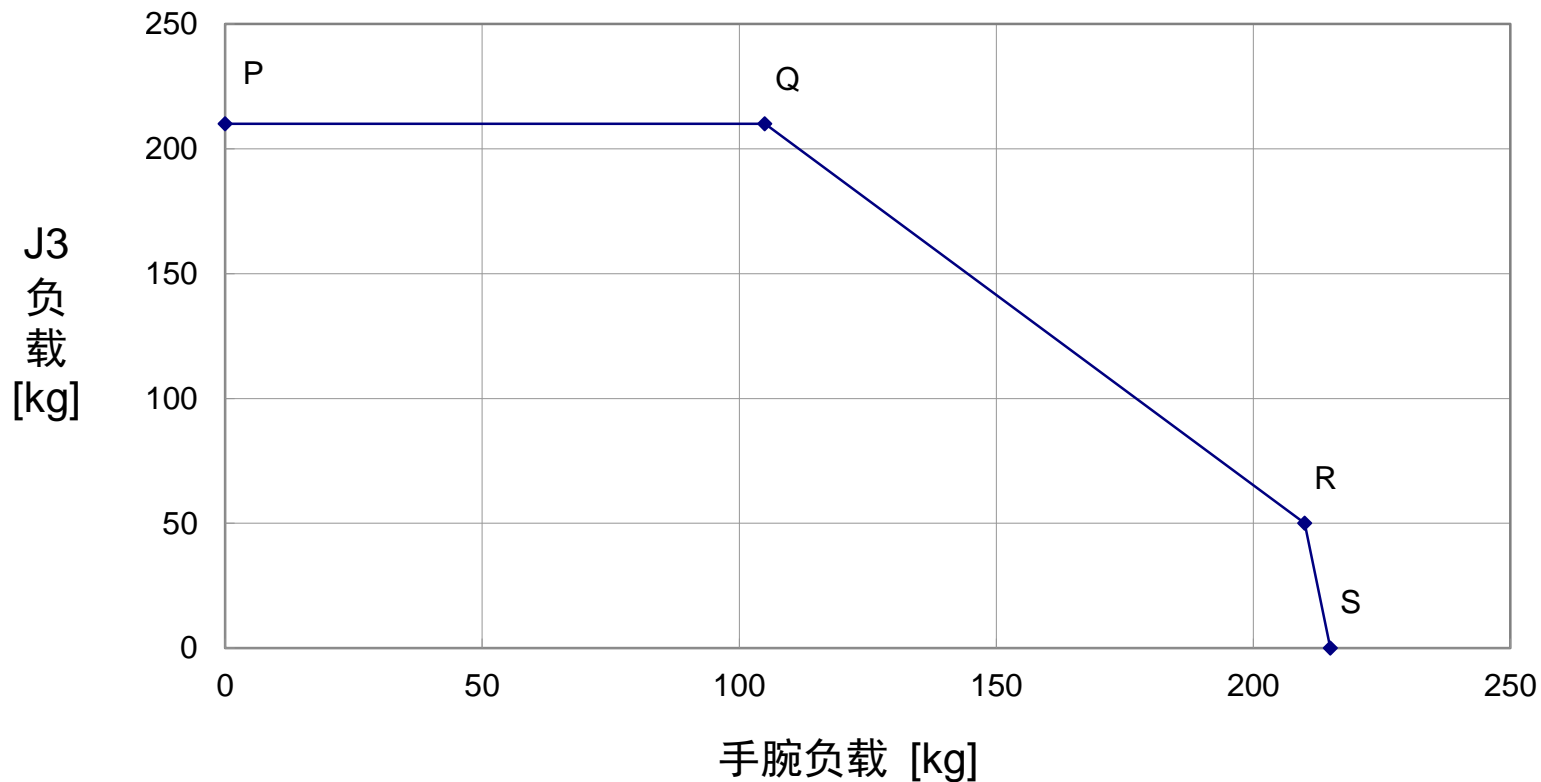
复合负载曲线图（标准惯量模式）



标准规格数据

转矩 (Nm)			惯量 (kgm ²)			质量 (kg)
J4	J5	J6	J4	J5	J6	
1700	1700	900	320	320	230	210

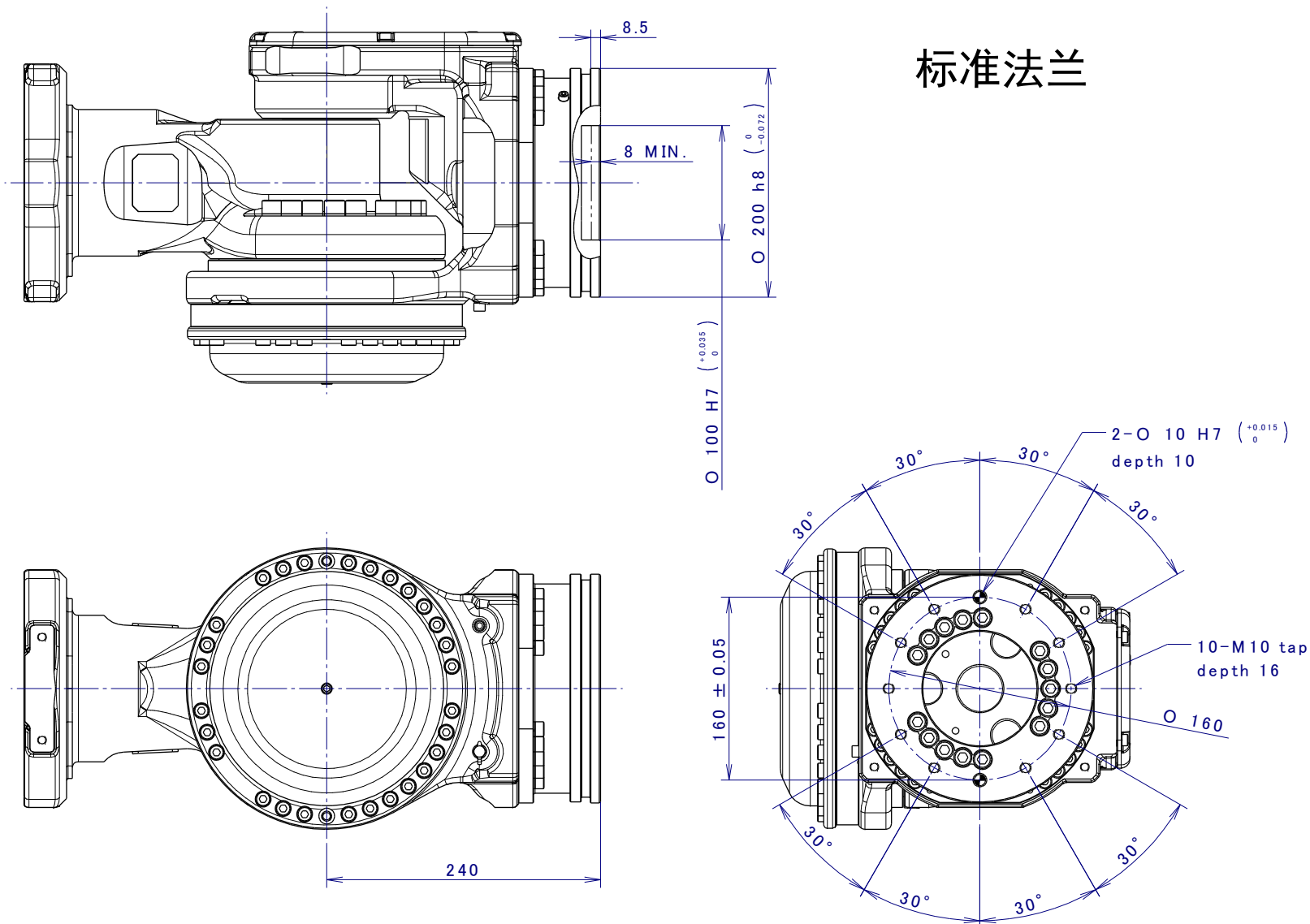
手腕负载和J3负载曲线图



	P	Q	R	S
手腕负载	0	105	210	215
J3 负载	210	210	50	0

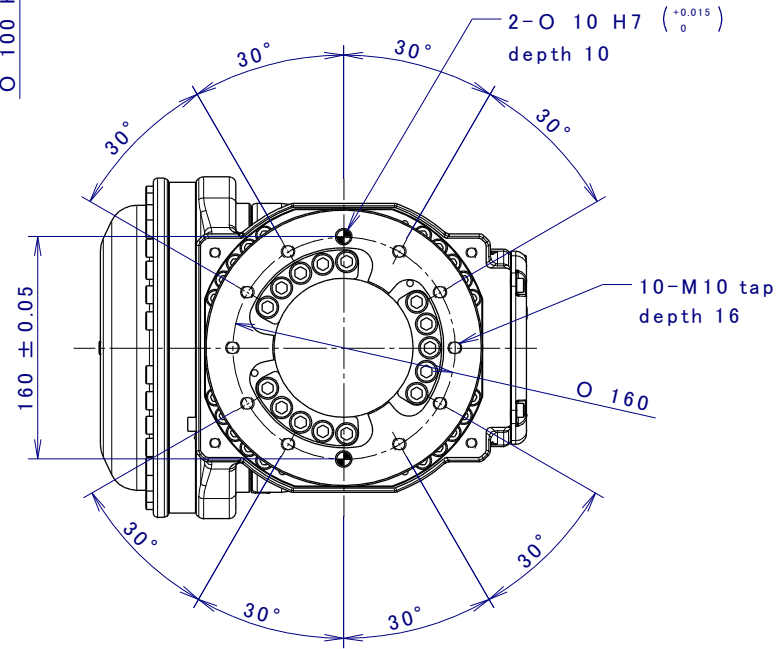
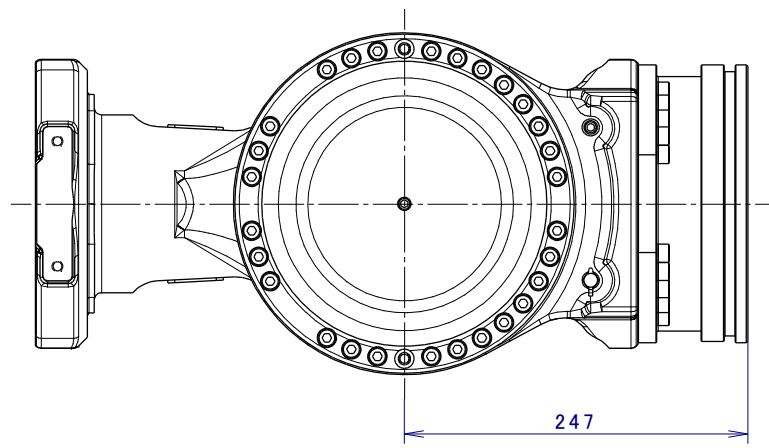
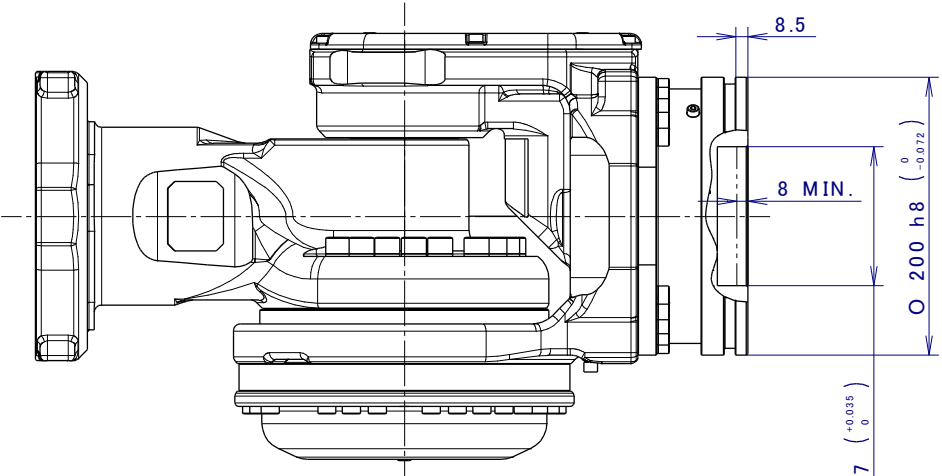
末端执行器安装面尺寸

标准法兰

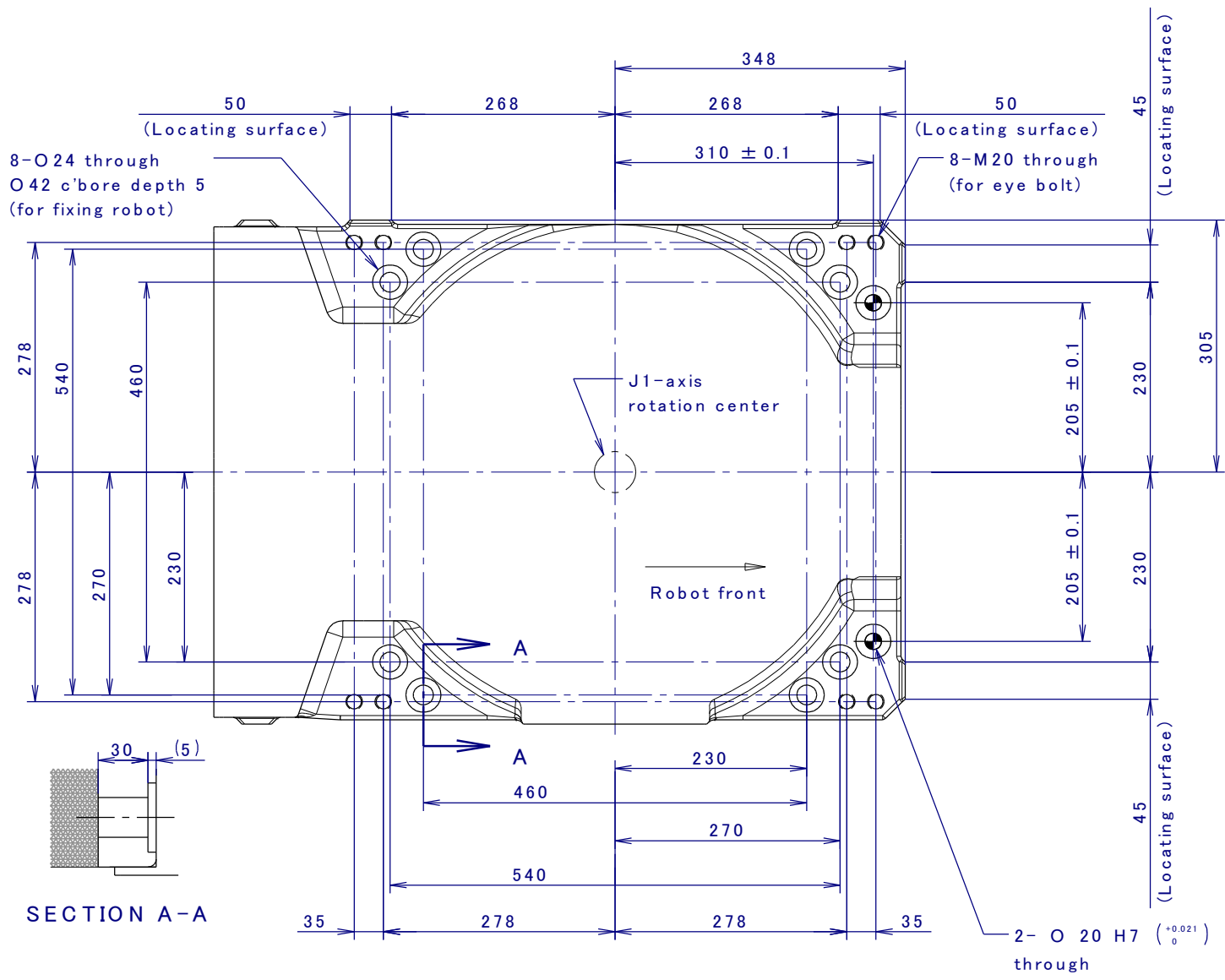


末端执行器安装面尺寸

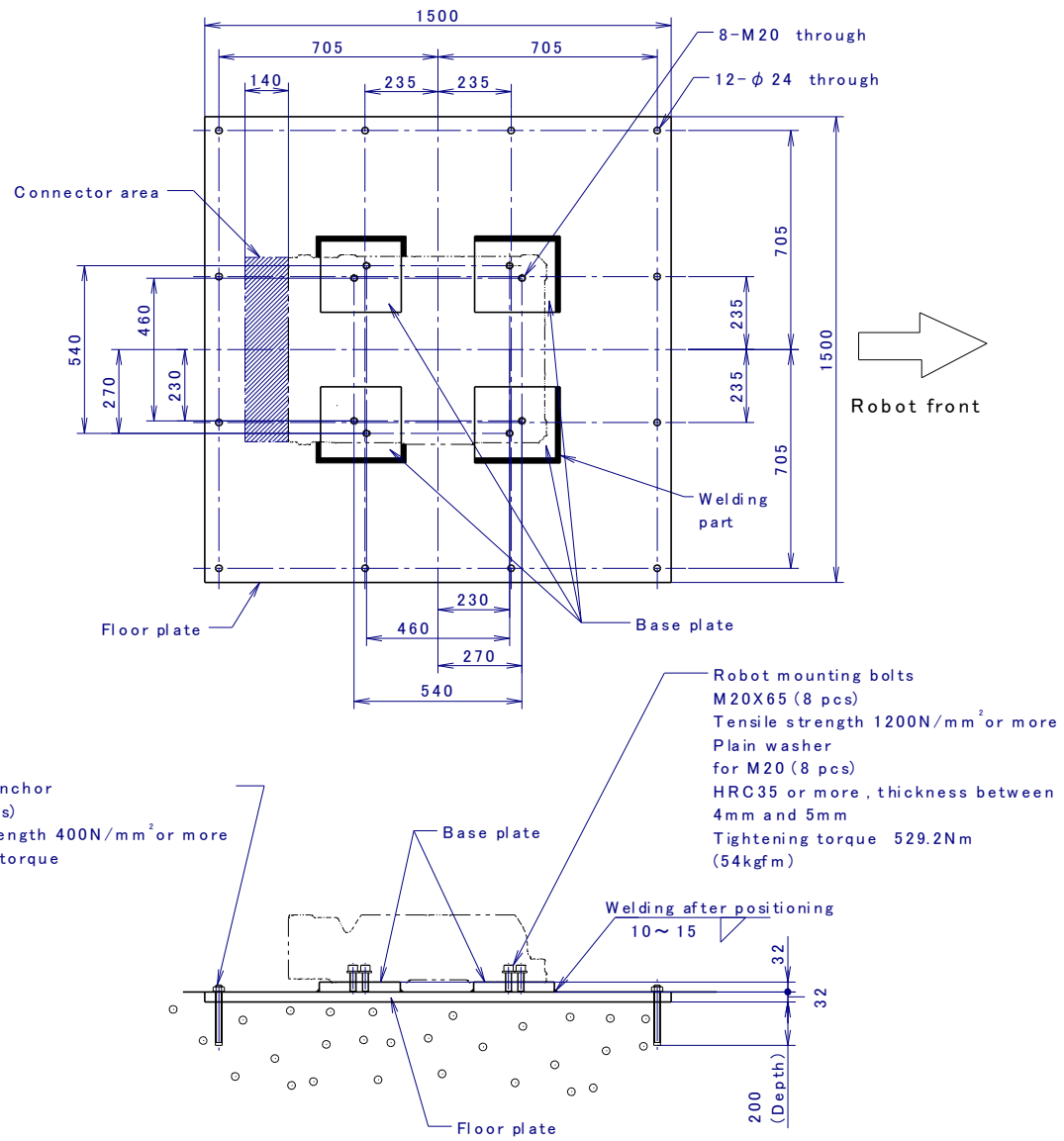
绝缘法兰



安装尺寸 (底座)



标准安装底板尺寸



设备安装面尺寸

